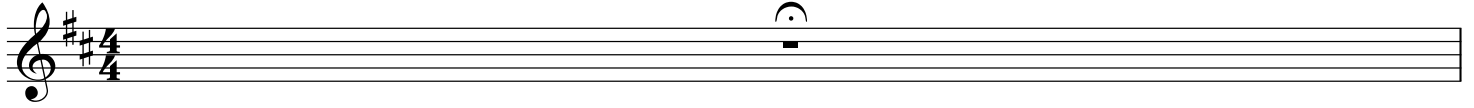


Can't catch me now

Arrangement: Rutger de Groot
v1, 3-2024

Start the sequence to form a soundscape of textures to make an atmosphere of nature.
Begin each sound from one side of the group and let it spread towards the other side.
Play with dynamics and phrasing to make it more lively.



The sequence is as followed:

Rubbing hands together, from a gentle and soft sound to bigger gestures and a harsher sound.

When the texture is well established start whistling birdsounds, make a convincing 'birds in the forest' landscape.

The piano starts when the atmosphere is right. The rubbing hands and the whistling continue.

On measure 112, when the last note is sung, reprise the sequence in reversed order.

2 $\text{♩} = 140$ **4** **2** **A**

S

M

A

B

gradually stop whistling *p*

gradually stop whistling *p* *mm*

There's bloodn_ the side of_ the

11

A

B

mm

moun- tain_ There's wri - ting_ all o - ver_ the wall

14

A *mm* *mm*

B

Sha dows of us are still dan - cin' In ev' - ry room and ev' - ry

17

mm

hall There's snow fal - lin' o - ver the ci - ty You

20

mm *mm*

thought that it would wash a - way The bit - ter taste of my

23

S *gradually stop whistling and rubbing hands*

M *gradually stop whistling and rubbing hands*

A *gradually stop rubbing hands* *mm*

B *gradually stop rubbing hands*

fu - ry And all of the mes - ses you made Yeah,

mp

But I'm in the trees, I'm in__

mp

But I'm in the trees, I'm in__

mp

But I'm in the trees, I'm in__

you think that you got__ a - way

the breeze My foot - steps on the ground__ You'll see__

the breeze My foot - steps on the ground__ You'll see__

the breeze My foot - steps on the ground__ You'll see__

my face__ in ev' - ry place__ But you__ can't catch me now

my face__ in ev' - ry place__ But you__ can't catch me now

my face__ in ev' - ry place__ But you__ can't catch me now

Through wa - ding grass, the months will pass You'll

Through wa - ding grass, the months will pass You'll

Through wa - ding grass, the months will pass You'll

feel it all a - round I'm here, I'm there, I'm ev -

feel it all a - round I'm here, I'm there, I'm ev -

feel it all a - round I'm here, I'm there, I'm ev -

- ry - where But you can't catch me now

- ry - where But you can't catch me now

- ry - where But you can't catch me now

43

no you can't catch me now_

no you can't catch me now_

no you can't catch me now_

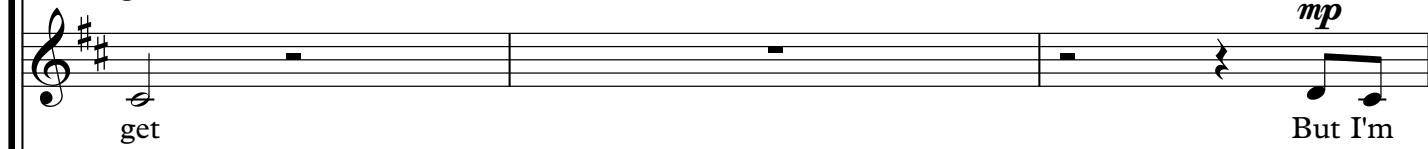
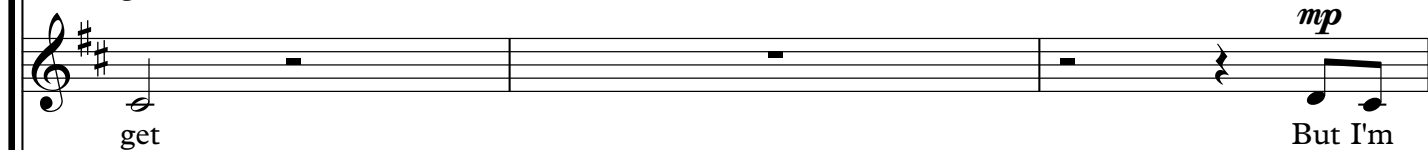
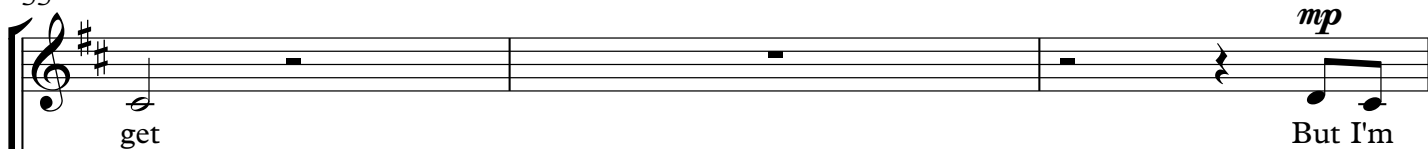
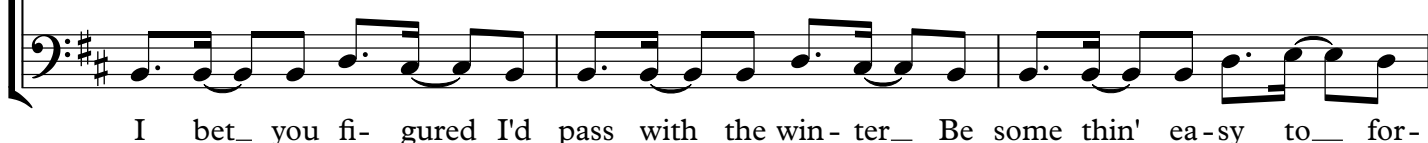
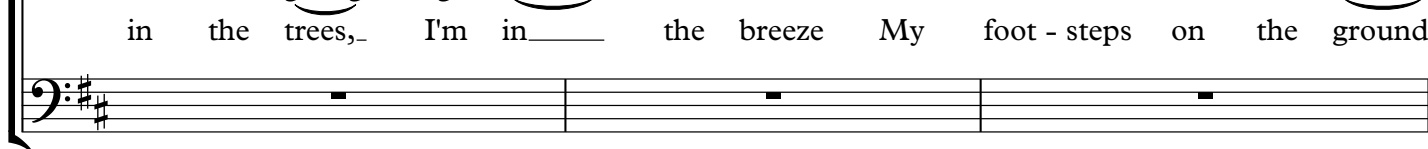
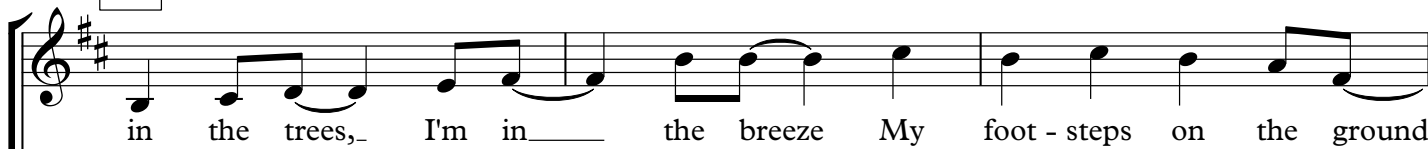
C

46

Bet you thought I'd ne - ver

49

do it Thought it'd go o - ver my head

almost whisper*almost whisper**almost whisper***D**

61

— You'll see my face in ev' - ry place But you can't catch me now

— You'll see my face in ev' - ry place But you can't catch me now

— You'll see my face in ev' - ry place But you can't catch me now

65

Through wa - ding grass, the months will pass You'll

Through wa - ding grass, the months will pass You'll

Through wa - ding grass, the months will pass You'll

68

feel it all a - round I'm here, —

feel it all a - round I'm here, —

feel it all a - round I'm here, —

8 70

— I'm there, I'm ev' - ry- where But you can't catch me now

— I'm there, I'm ev' - ry- where But you can't catch me now

— I'm there, I'm ev' - ry- where But you can't catch me now

73

— no you can't catch me now_

— no you can't catch me now_

— no you can't catch me now_

76

E

ooh

ooh

ooh

ooh

79

ooh ooh

ooh ooh

ooh ooh

ooh ooh

83

F

ooh

ooh *mf solo* You can't,

ooh

ooh *mf solo* You can't,

87

duet

you can't catch me now I'm co-min' like a storm in - to your town You can't, *duet*

you can't catch me now I'm co-min' like a storm in - to your town You can't,

91

S
M

you can't catch me now I'm high-er than the hopes that you brought

A
B

you can't catch me now I'm high-er than the hopes that you brought

94

S
M

mf add more singers

down You can't, you can't catch me now I'm co-min' like a

A
B

mf add more singers

down You can't, you can't catch me now I'm co-min' like a

97

S
M

storm in - to your town You can't, you can't catch me now.

A
B

storm in - to your town You can't, you can't catch me now.

add more singers

100

S
M1

I'm high-er than the hopes that you brought down You can't,

M2
A2

couple singers from Mezzo f

couple singers from Alto

can't catch me now can't

A1
B

f add more singers

I'm high-er than the hopes that you brought down You can't,

103

S
M1

you can't catch me now__ I'm co-min' like a storm in - to your

M2
A2

catch me now like a storm can't

A1
B

you can't catch me now__ I'm co-min' like a storm in - to your

106

S
M1

town You can't, you can't catch me now__ I'm high-er than the

M2
A2

catch me now can't catch me now high - er

A1
B

town You can't, you can't catch me now__ I'm high-er than the

109

S
M1

hopes that you brought down You can't, you can't catch me now

M2
A2

hopes can't catch me now can't catch me now

A1
B

hopes that you brought down You can't, you can't catch me now

add more singers from Mezzo and Alto

112

S
M1
M2
A2
A1
B

I'm co-min' like a storm in - to your town You can't,
like a storm can't catch me now can't
I'm co-min' like a storm in - to your town You can't,

115

S
M1
M2
A2
A1
B

you can't catch me now___ You can't, You can't, You can't,___
catch me now You can't, You can't, You can't,___
you can't catch me now___ You can't, You can't, You can't,___

G

118

ff Reprise Rubbing hands Reprise whistling birdsounds **7**
ff Reprise Rubbing hands Reprise whistling birdsounds **7**
ff Reprise Rubbing hands Reprise whistling birdsounds **7**

Find an ending together after the last piano chord